



New Build Warehouse/Trade Unit

Plymouth Road, Lee Mill, Ivybridge PL21 9EE

Summary

- Prominent location adjacent to the A38, next to Screwfix
- 6,000ft² / 557m²
- B8 use with ancillary trade counter

Location

Plymouth is one of the largest regional centres in the South-West, with a resident population of approximately 250,000, which is projected to rise to approx. 300,000 within 10 years. The city benefits from a mainline railway station with services to London Paddington in just over 3 hours. There is also a busy port, continental ferry terminal and the largest naval base in western Europe.

Lee Mill is situated about 8 miles east of Plymouth city centre, just off the A38 Expressway dual carriageway. Nearby occupiers include Screwfix, Tesco and Marquis Leisure. Plymouth Road forms the eastbound slip road from the A38 to Lee Mill industrial estate and a superstore.

Description

The property will comprise a newly-built B8 warehouse unit with eaves height of approx. 6m, to be of steel portal frame construction with conventional masonry walls and profile steel cladding and roof, incorporating daylight panels and four roller shutter goods loading doors.

Accommodation

	m ²	ft ²
Total area	557	6,000

Services & Energy Performance

The following services are supplied to the property: Mains water, private drainage and 3-phase electricity. EPC not applicable.

Planning / Use

The permitted use will be warehousing/distribution, falling within Class B8 of the Use Classes Order. The property is also suited to industrial and retail uses falling within Class E, subject to Planning. The local planning authority is South Hams District Council 01803 861234.

West Park House, Plymouth Road, Lee Mill, Ivybridge PL21 9EE



Tel: 01752 222135

www.listers.uk.com

West Park House, Plymouth Road, Lee Mill, Ivybridge PL21 9EE

Terms of Availability (subject to contract)

The property is to let on conventional flexible leasehold terms, at an initial annual rent of £75,000pa + VAT, subject to other terms.

Business Rates

Rateable Value (2023): £ to be assessed

UBR multiplier 2023/24: 51.2p in the £

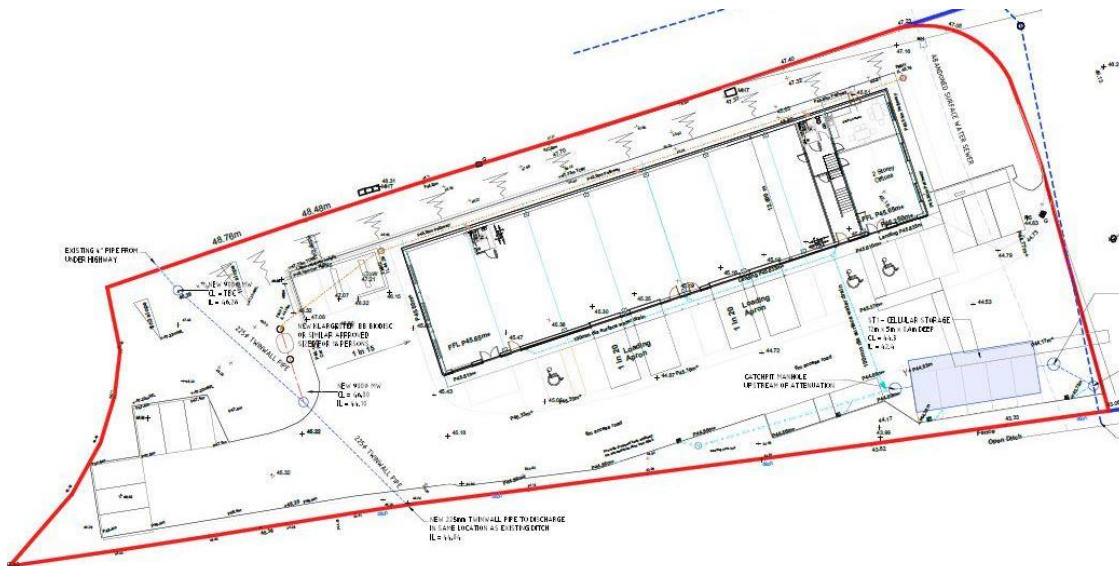
Viewing

To arrange inspection and for further information please contact us on:

(01752) 222135

enquiries@listers.uk.com

www.listers.uk.com



Listers
PROPERTY CONSULTANTS

01752 222135

MISREPRESENTATION ACT COPYRIGHT DISCLAIMER

No part of this document may be reproduced or transmitted in any form or by any means without prior written consent of Listers Ltd. It is based on material that we believe to be reliable. Whilst every effort has been made to ensure its accuracy, we cannot offer any warranty that it contains no factual errors. We would like to be told of any such errors in order to correct them. All Rights Reserved. COPYRIGHT LISTERS Ltd 2025.

Registered in England Company Number: 8473324 VAT no: 159 0357 01